

CUSTOMER COPY

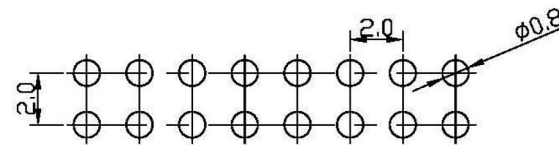
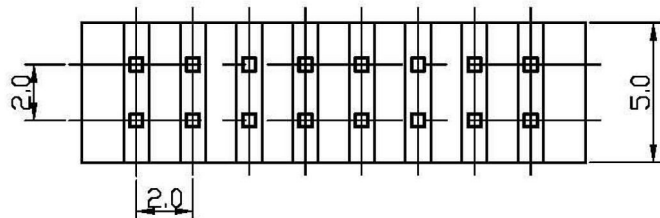
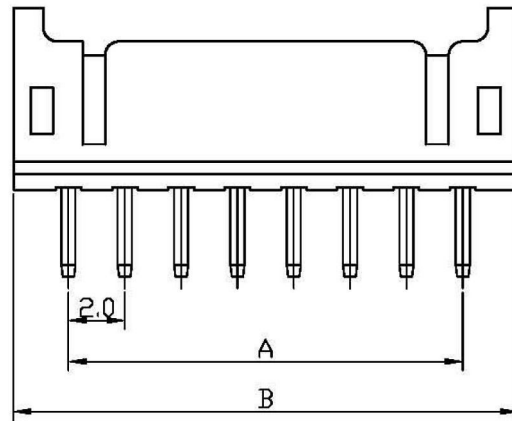
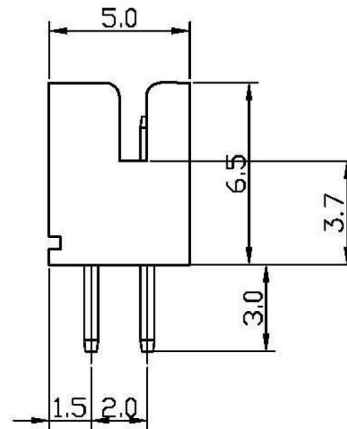
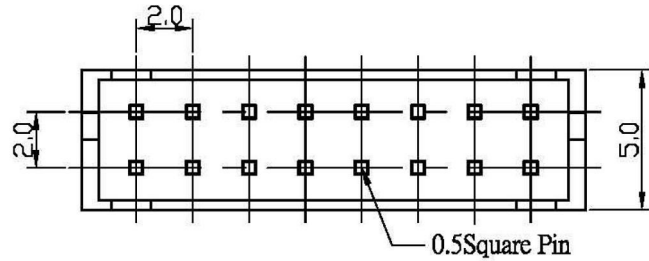
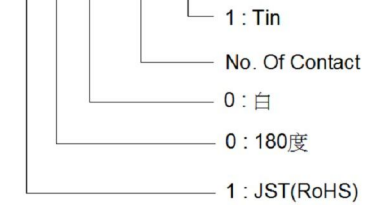
REV.	DESCRIPTION	APP.	DATE
A	NEW DESIGN	Ader	2015/2/2

Specification

Current Rating: 2A AC DC
 Voltage Rating: 250V AC, DC
 Operating Temp: -25°C ~ +85°C
 Contact Resistance: 20mΩ Max
 Insulation Resistance: 1000MΩ Min

*Oder Information

1222 1 0 0 XX X



Poles	Dimension mm (in.)		Note.
	A	B	
4	2.0	6.0	
6	4.0	8.0	
8	6.0	10.0	
10	8.0	12.0	
12	10.0	14.0	
14	12.0	16.0	
16	14.0	18.0	
18	16.0	20.0	
20	18.0	22.0	
22	20.0	24.0	
24	22.0	26.0	
26	24.0	28.0	
28	26.0	30.0	
30	28.0	32.0	
32	30.0	34.0	
34	32.0	36.0	
40	38.0	42.0	

 鈺滿榮企業股份有限公司 ACMELUX CO., LTD.
 TEL: 886-2-85124595 FAX: 886-2-85124322

0.0±0.30	SCALE:	TITLE: 2.00mm Pitch Wafer 180度 DIP	PART NO:
0.00±0.20			
0.000±0.1	UNIT: mm	MATL: RoHS	APP BY: Cheryl
		DWC. NO. 1222100XXX	CHK BY: Miao
			DR BY: Ader

A303